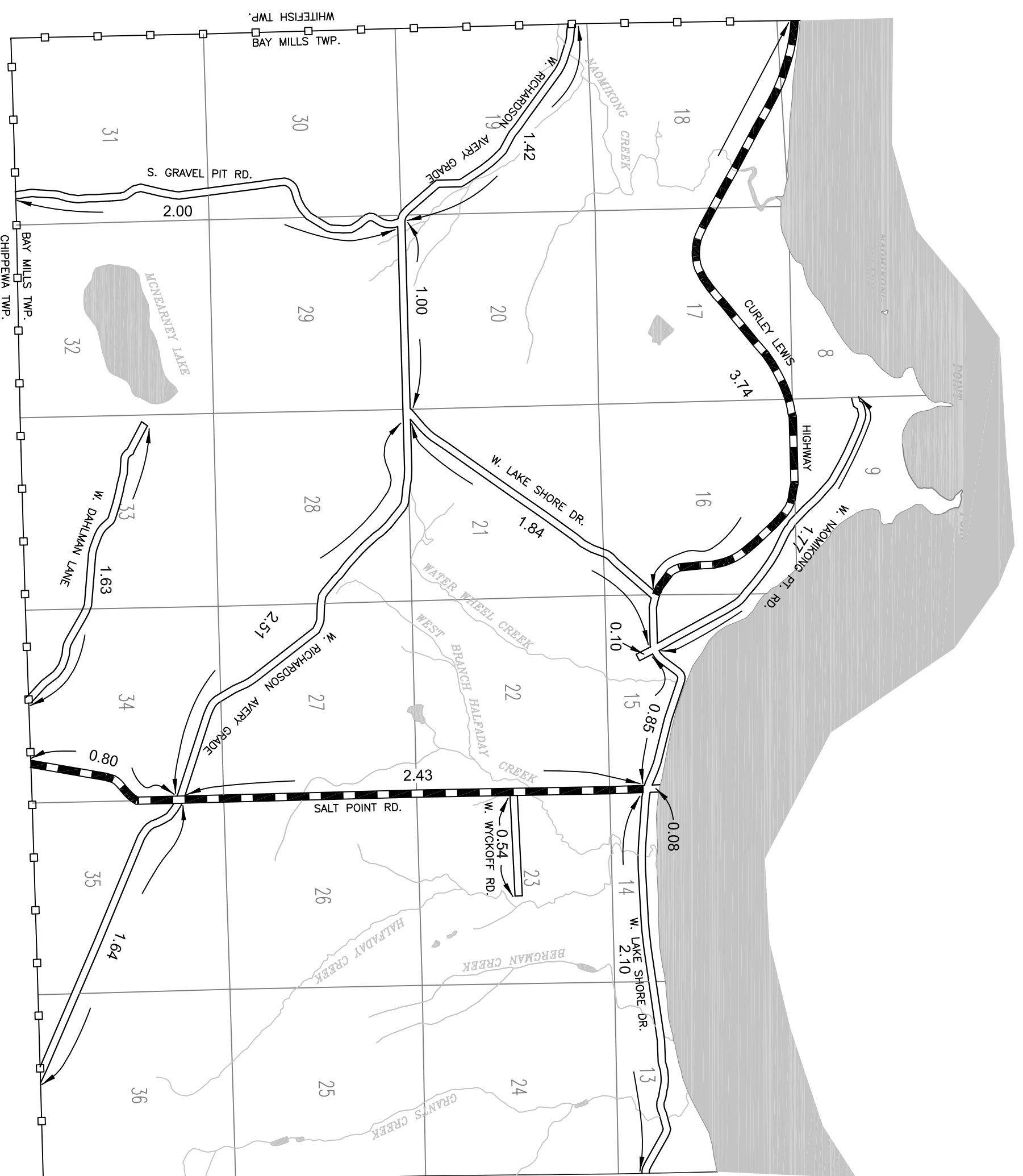


T47N, R5W

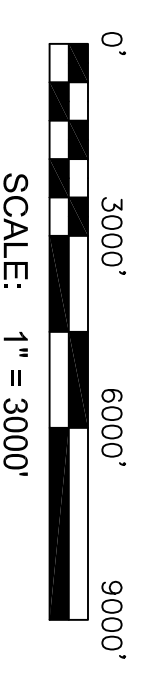
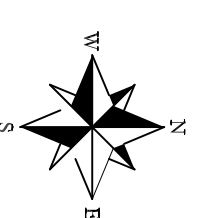


LEGEND

- COUNTY LINE
- CORPORATE LIMITS
- STATE TRUNKLINE
- COUNTY PRIMARY
- COUNTY LOCAL
- ADJACENT COUNTY
- CITY OR VILLAGE STREET
- URBAN AREA BOUNDARY

PRIMARY ROAD SYSTEM IS 6.97 MILES THIS SHEET
 LOCAL ROAD SYSTEM IS 17.48 MILES THIS SHEET

T47N R05W
 BAY MILLS TOWNSHIP



PREPARED BY: R. LAITINEN
 CHIPPEWA CO. - 17 T47N R05W

SHEET NUMBER 11