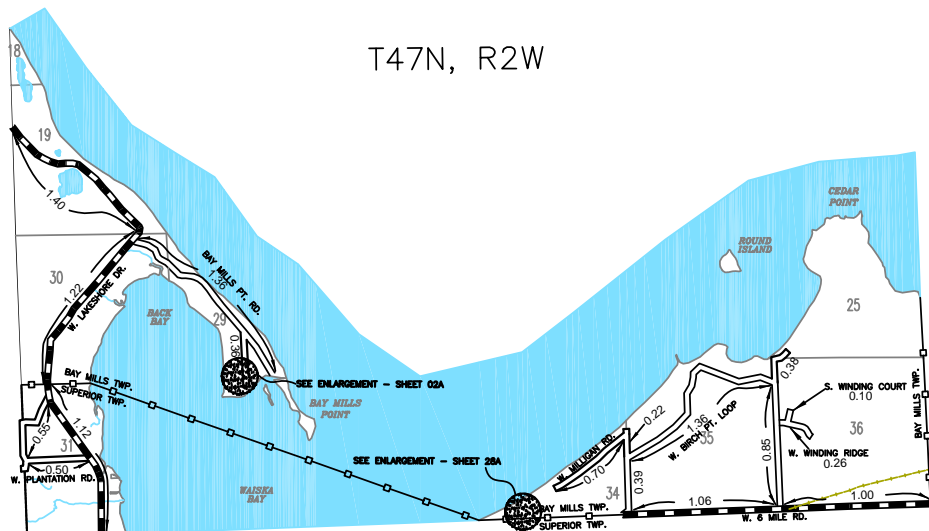


T47N, R2W

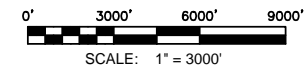


# **LEGEND**

COUNTY LINE	-----
CORPORATE LIMITS	-o-o-o-o-
STATE TRUNKLINE	=====
COUNTY PRIMARY	=====
COUNTY LOCAL	=====
ADJACENT COUNTY	-----
CITY OR VILLAGE STREET	-----
URBAN AREA BOUNDARY	-----

PRIMARY ROAD SYSTEM IS 5.80 MILES THIS SHEET  
LOCAL ROAD SYSTEM IS 7.03 MILES THIS SHEET

T47N R02W  
BAY MILLS TOWNSHIP  
SUPERIOR TOWNSHIP



PREPARED BY: R. LAITINEN  
CHIPPEWA CO. - 17 T47N R02W