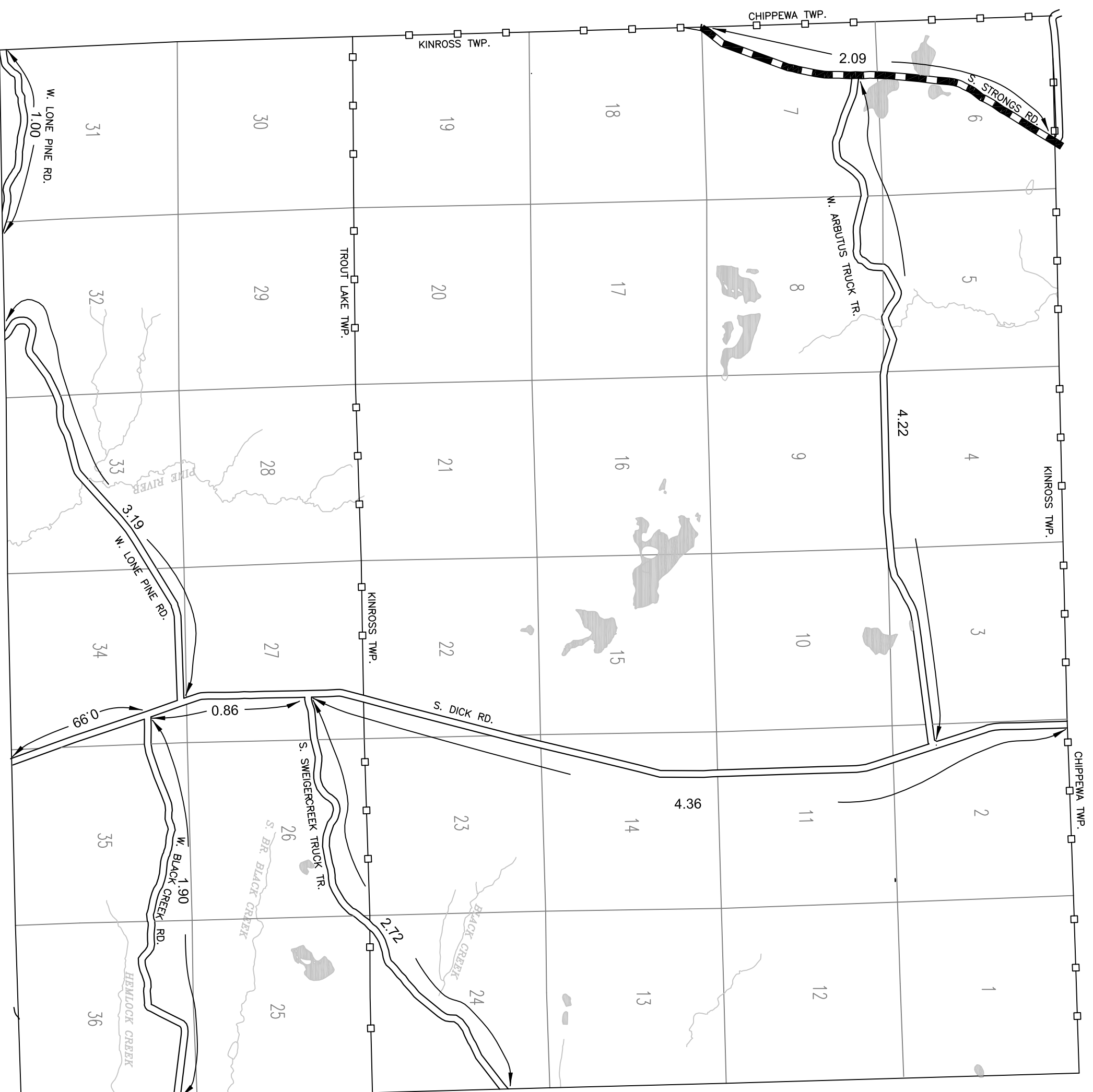


T45N, R5W

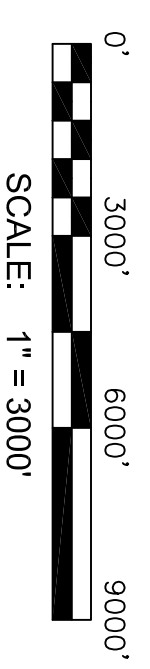
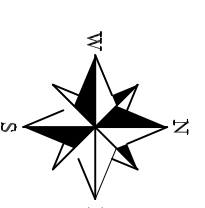


**LEGEND**

- COUNTY LINE
- CORPORATE LIMITS
- STATE TRUNKLINE
- COUNTY PRIMARY
- COUNTY LOCAL
- ADJACENT COUNTY
- CITY OR VILLAGE STREET
- URBAN AREA BOUNDARY

PRIMARY ROAD SYSTEM IS 2.09 MILES THIS SHEET  
 LOCAL ROAD SYSTEM IS 19.24 MILES THIS SHEET

T45N R05W  
 TROUT LAKE TOWNSHIP  
 KINROSS TOWNSHIP



PREPARED BY: R. LAITINEN  
 CHIPPEWA CO. - 17 T45N R05W

SHEET NUMBER 29